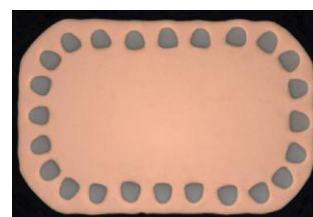


NbTi wire data sheet

● F24 rectangular wire

Technical Details

Number of filaments	24
Cu/Sc ratio	6.50 ± 10%
Nominal dimension (bare)	from 1.53 x 1.00 mm ² to 1.85 x 1.21 mm ²
Nominal dimension after insulation and shaping	from 1.60 x 1.07 mm ² to 1.93 x 1.29 mm ²



Critical currents

Code	I _c @ 4,2 K and 0.1 μV/cm							
	3 T	4 T	5 T	6 T	7 T	8 T	9 T	9.5 T
F24-6.5	1.53 x 1.00		445	355	280	190		
	1.63 x 1.06		530	425	330	230		
	1.85 x 1.21		655	525	415	290		
	2.00 x 1.20	1130	920	750	590			
	2.53 x 1.23			910	745	580	410	
	2.63 x 1.33			1000	815	630	445	260

The I_c-values are examples taken from long run measurements of our standard wires.

Diameters and tolerances

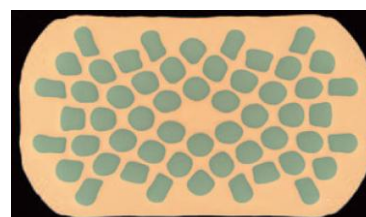
Code	Nominal dimension		Tolerance on single length (mm)	RRR	Twist Pitch (mm)	
	bare (mm ²)	insulated (mm ²)				
F24-6.5	1.53 x 1.00	1.53 x 1.00	1.60 x 1.07 ± 0.01	± 0.005	> 80	50 ± 20%
	1.63 x 1.06	1.63 x 1.06	1.71 x 1.14 ± 0.01	± 0.005	> 80	50 ± 20%
	1.85 x 1.21	1.85 x 1.21	1.93 x 1.29 ± 0.01	± 0.005	> 80	50 ± 20%
	2.00 x 1.20	2.00 x 1.20	2.08 x 1.28 ± 0.01	± 0.005	> 80	75 ± 20%
	2.53 x 1.23	2.53 x 1.23	2.62 x 1.32 ± 0.01	± 0.005	> 80	75 ± 20%
	2.63 x 1.33	2.63 x 1.33	2.72 x 1.42 ± 0.01	± 0.005	> 80	75 ± 20%

NbTi wire data sheet

● F54 rectangular wire

Technical Details

Number of filaments	54
Cu/Sc ratio	1.35 ± 10%
Nominal dimension (bare)	from 0.72 x 0.46 mm ² to 1.88 x 1.18 mm ²
Nominal dimension after insulation and shaping	from 0.77 x 0.51 mm ² to 1.96 x 1.26 mm ²



Critical currents

Code		I_c @ 4,2 K and 0.1 μ V/cm							
		3 T	4 T	5 T	6 T	7 T	8 T	9 T	9.5 T
F54-1.35	0.72 x 0.46	550	420	350	495	376	262	208	141
	0.99 x 0.71								
	1.19 x 0.74								
	1.36 x 0.86								
	1.58 x 0.98								
	1.88 x 1.18								

The I_c -values are examples taken from long run measurements of our standard wires.

Diameters and tolerances

Code	Nominal dimension		Tolerance on single length (mm)	RRR	Twist Pitch (mm)
	bare (mm ²)	insulated (mm ²)			
F54-1.35	0.72 x 0.46	0.72 x 0.46	0.77 x 0.51 ± 0.01	± 0.005	> 65
	0.99 x 0.71	0.99 x 0.71	1.05 x 0.77 ± 0.01	± 0.005	> 65
	1.19 x 0.74	1.19 x 0.74	1.25 x 0.80 ± 0.01	± 0.005	> 65
	1.36 x 0.86	1.36 x 0.86	1.42 x 0.92 ± 0.01	± 0.005	> 65
	1.58 x 0.98	1.58 x 0.98	1.65 x 1.05 ± 0.01	± 0.005	> 65
	1.88 x 1.18	1.88 x 1.18	1.96 x 1.26 ± 0.01	± 0.005	> 65